

I
N
F
O
R
M
A
T
I
O
N



GH100

UNIVERSAL SURFACE TESTER



Measuring wetting properties
on extensive surfaces ...

the GH100 is just right !

- characterization of infinitely large surfaces or sample bodies by a novel measuring optics arrangement
- smaller dimensions and proper industrial design for on-line process control
- automatic contour analysis with WINDOWS TM software
- computer-controlled motor-driven zoom and focusing
- computer-controlled and pulseless dosing with auto-refill
- advancing and retreating angles
- calculation of surface energy
- operator-friendly sample database
- optional work platforms and automatic positioning and portal systems, also for clean rooms

The complete system from portable through laboratory up to automatic production

The basic configuration is optimally suited to portable use. Printing rolls, printing blankets, automobiles and ships' hulls can be measured immediately without any assembly work.



If small samples are to be measured in a laboratory or if extensive preliminary experiments are necessary then the basic configuration can be extended by a

working platform to create a top-quality laboratory instrument.



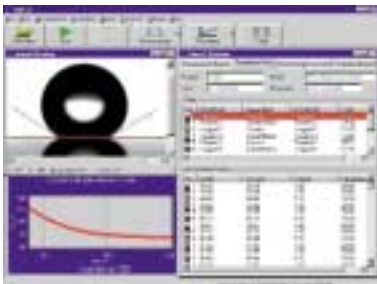
Fully automatic laboratory measurements up to a sample size of 400 x 500 mm are possible with the use of the

optional automatic positioning stage. For fully automatic production control at a high production frequency the portal system is eminently suitable; it can even handle samples up to 8m long.



GH100: one module for all measuring tasks

SOFTWARE SW23



Powerful but still easy to use WINDOWS™ software.

- measuring pendant/sessile drops
- 4 different fit options (polynomial, tangential, height/width, Laplace)
- all established models for calculating the surface energy (acid/base, Fowkes, Owens-Wendt-Rabel-Kaelble, Schultz1, Schultz2, Wu, Zisman)
- built-in liquid database (currently contains 80 different test liquids)
- freely configurable tables and graphics
- speed buttons
- macro language
- well-laid-out presentation of drop images, tables and graphs in different windows
- export/import functions for data and drop images
- 32-bit support
- network capability

GH100 technical data

Sample size (max.)	∞x∞ mm	Image size (min.)	1 mm	Max. distance GH100-PC	10 m
Sample thickness (max.)	∞ mm	Dimensions	270x270x150 mm	Number of liquids	4
Zoom range:	6-fold	Weight	7.2 kg		



<http://www.kruss.de>

KRÜSS GmbH
Wissenschaftliche Laborgeräte
Borsteler Chaussee 85-99a
D-22453 Hamburg
Tel: (040) 514 401-0
Fax: (040) 511 6049
eMail: info@kruss.de

KRÜSS GmbH
38/40 Avenue Jean Jaurès
F-91120 Palaiseau
Tel: (01) 6014 9494
Fax: (01) 6014 9548
eMail: info@kruss.fr

KRÜSS USA
9305 Monroe Road, Suite B
Charlotte, NC 28270-1488
Tel: (704) 847 8933
Fax: (704) 847 9416
eMail: kruss@krussusa.com